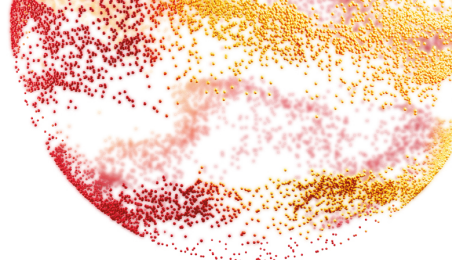


**ESC Congress  
2025 Madrid**

**29 August to 1 September**

TOGETHER WITH

**World Congress  
of Cardiology**



**EACCME<sup>©</sup>**

European Accreditation Council for Continuing Medical Education

# Certificate

The **ESC Congress 2025**  
**Madrid, Spain, 29 August - 01 September 2025**  
organised by **European Society of Cardiology**

has been accredited

by the European Accreditation Council for Continuing Medical Education (EACCME<sup>©</sup>)  
for a maximum of **29.0** European CME credits (ECMEC<sup>©</sup>s).

**Alla Shevchenko**

has been awarded **29.0** European CME Credits (ECMEC<sup>®</sup>s)  
for his/her attendance at this event

**Professor Tomasz Guzik, FESC**  
*Chairperson Congress Programme Committee (CPC)*

**Prof. Vassilios Papalois**  
*President of UEMS*

**Dr. João Grenho**  
*Secretary General of UEMS*

#### Accreditation Statement

Each medical specialist should claim only those credits that he/she actually spent in the educational activity. Through an agreement between the European Union of Medical Specialists and the American Medical Association, physicians may convert EACCME<sup>®</sup> credits to an equivalent number of AMA PRA Category 1 Credits<sup>™</sup>. Information on the process to convert EACCME<sup>®</sup> credits to AMA credits can be found at <https://edhub.ama-assn.org/pages/applications>. Live educational activities occurring outside of Canada, recognised by the UEMS-EACCME<sup>®</sup> for ECMEC<sup>®</sup> credits are deemed to be Accredited Group Learning Activities (Section 1) as defined by the Maintenance of Certification Program of the Royal College of Physicians and Surgeons of Canada.

#### Information regarding the conversion of EACCME<sup>®</sup> credits

Credit will be converted based on one (1) hour of participation equalling one credit for all activities. Physicians wishing to convert EACCME<sup>®</sup> credits to AMA PRA Category 1 Credit<sup>™</sup> will be required to access the AMA website at <https://edhub.ama-assn.org/pages/applications> to obtain the necessary paperwork and instructions. Physicians and other health care professionals will be required to pay a processing fee to the AMA. For other countries, please contact the relevant national/regional accreditation authority.



**ESC**

European Society  
of Cardiology